

CARRIAGE NO 5

46, 47, 48, 49. BUILT 1924 BY CRAVENS

6 THIRD CLASS COMPTS 72 SEATS

T. C. A.  
WEIGHT: - 28-10-0

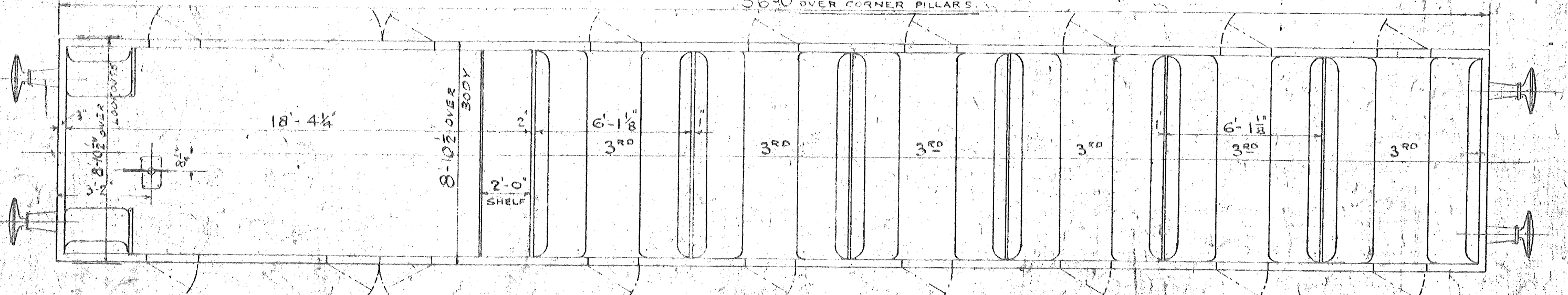
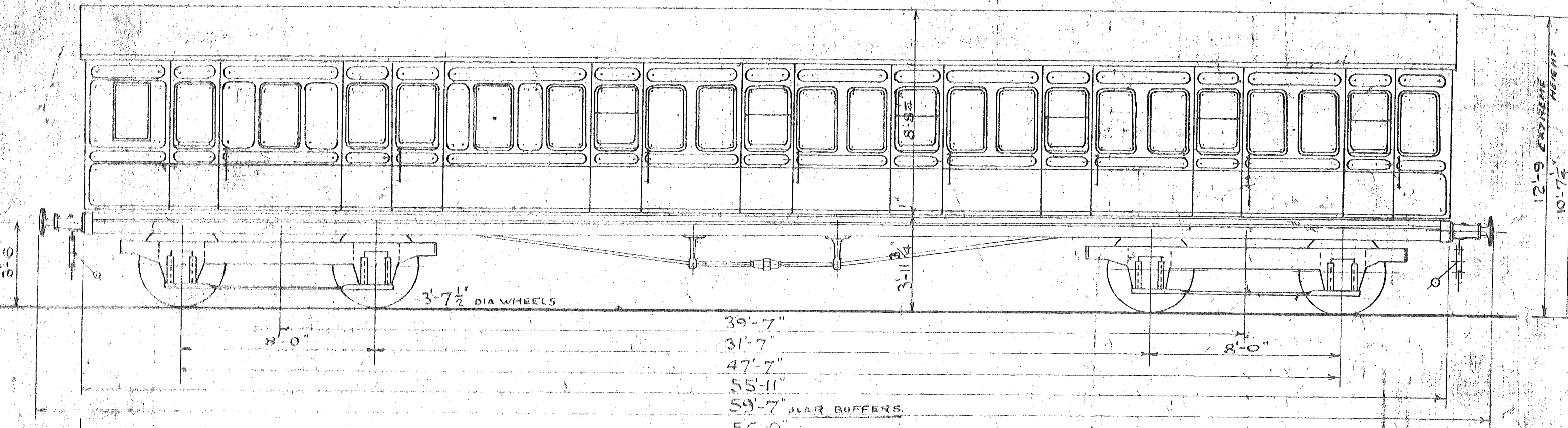
ELECTRIC LIGHT

VACUUM BRAKE

GENERAL DRAWING NO 6408-C.

UNDERFRAME " " 5952A-C.

BOGIE " " 5804A-C.



C.L.C. BRAKE THIRD CARRIAGE

CAR

6 T

WEI

ELE

VAC